

Chrysalis “Greenery” is Pantone’s Color of the Year

Posted by Zahner on January 10, 2017

The global color authority Pantone has named “Greenery” the color of the year for 2017. This provides an opportunity for designers to look at products and systems with green-toned color palettes.

Pantone Greenery Makes its Mark in Architecture

Pantone’s Greenery tone is already making an architectural mark in Columbia, Maryland, where the [Chrysalis](#) is rising. This unique project is simultaneously a sculpture, pavilion and a stage performance space. Clad in a palette of green-coated aluminum shingles of varying size and tone, the Chrysalis is nearing completion at its home in Merriweather Park at Symphony Woods. The colors of the Chrysalis closely match the “Greenery” swatch chosen by Pantone as the color of 2017.

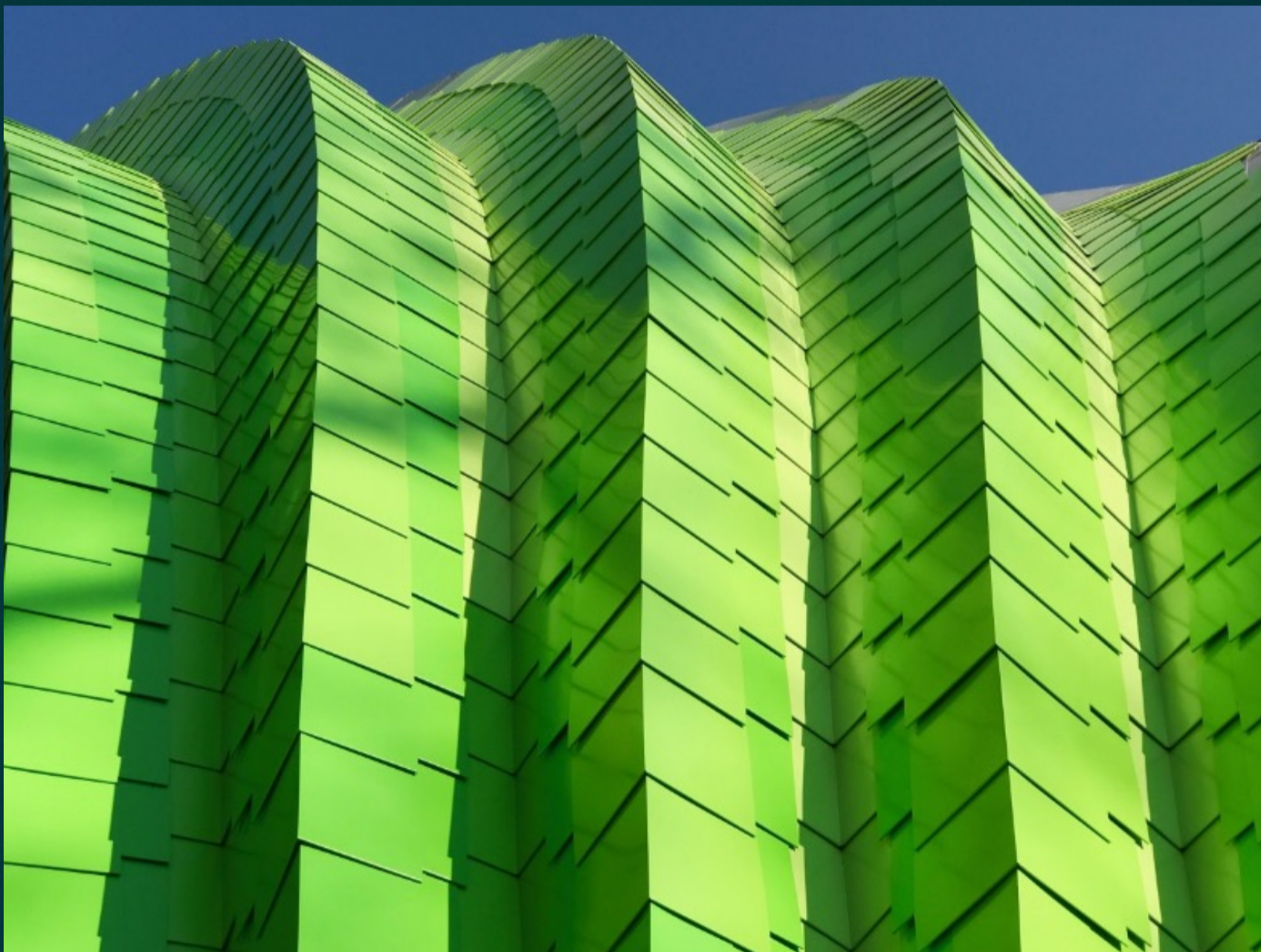
Manufactured by [Zahner](#), the Chrysalis features pleated aluminum forms painted with four shades of green. Zahner developed both the ZEPSS secondary structure as well as the painted aluminum exterior which clads the structure. The parts are manufactured in Kansas City, where both the painted aluminum plates and structural ZEPSS Assemblies are formed.

The Inner Arbor Trust which is developing the project brought in a world-class team of designers, engineers, contractors and specialty fabricators and installers to produce this project. Designed by [Marc Fornes](#), head of THEVERYMANY, a New York City based art and architecture practice. The Chrysalis is set to open on [April 22, 2017](#) at Merriweather Park at Symphony Woods.

In the summer of 2013, the Inner Arbor Trust established its brand mark and the green color palette for the Chrysalis, the first phase development in Merriweather Park at Symphony Woods. Designed to both stand out as well as blend into its surrounding nature environment, the Chrysalis Stage Pavilion will provide a flexible performance space for the Columbia, Maryland community.



Inner Arbor Trust selection of four paint swatches for the Chrysalis.



Pantone Greenery in architectural use by the Chrysalis Pavilion.



Chrysalis Stage Pavilion Sculpture in Merriweather Park.

“Beyond being in nature, the Chrysalis in Merriweather Park at Symphony Woods is *of* nature.”

— Michael McCall, President & CEO, [Inner Arbor Trust](#) and [Strategic Leisure](#)