

# MERRIWEATHER PARK AT SYMPHONY WOODS



The Chrysalis amphitheater beyond, framed by The Caterpillar

## *Art of Place, Place of Art*

For nearly a half century, Merriweather Post Pavilion has entertained Baltimore-Washington and beyond. Named the 4<sup>th</sup> best amphitheater in the country by *Rolling Stone* magazine, the venerable venue is enveloped by Symphony Woods, creating an enchanting experience endeared by millions in the Mid-Atlantic.

Merriweather Park at Symphony Woods will be a wondrous, sensuous park where people are free to engage in daily meditation, or visit as a special destination. Merriweather Park is an immersive escape for mind, body and soul, accessible to all to vacation by the hour. The 50-acre extraordinary Park has been mandated by Howard County, Maryland, which declared that the Merriweather-Symphony Woods

Neighborhood be a new kind of cultural park where the landscape becomes a setting for arts, cultural and civic uses. The landowner, Columbia Association, enabled the Park by creating and empowering the Inner Arbor Trust, an

independent 501(c)(3), to design, develop and operate the Park; and, it provided the Trust with land control via a perpetual easement, as well as \$1.6 Million in funding.

Howard County has provided \$6.4 Million for the first phase of development, the sculptural

Chrysalis amphitheater. The Chrysalis will host community and professional performances on the 5,000 sq. ft. stage, hosting 400 guests on stage, and thousands on the lawn.

*“This is an exciting time for  
Downtown Columbia.*

*Merriweather Park at Symphony Woods  
will be a critical part of making  
Downtown a vibrant place.”*

**Howard County Executive Allan Kittleman**





The Picnic Table

# MERRIWEATHER PARK AT SYMPHONY WOODS

MERRIWEATHERPARK.ORG

*Art of Place, Place of Art*



Land Horns entrance



The Caterpillar "art of bounds"



The Butterfly guest services building



Song Cycles entrance



Skyhorns entrance



Wonderground



The Chrysalis amphitheater



The Butterfly guest services building

*"Unique and beautiful places foster social interaction and boost economic development. They attract new talent and vitality. Merriweather Park at Symphony Woods will do that and more."*

**Howard County Executive Allan Kittleman**

© Inner Arbor Trust, Inc. 2015





In the middle of the 8 million person market...



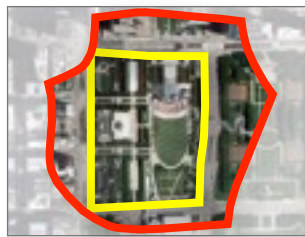
...there is a wondrous, sensuous park.

*In the Art of it all...*

Merriweather Park at Symphony Woods is a 50 acre art park in the heart of millions of sq. ft. of existing, current and future mixed-use development



Scale Reference:  
Tivoli Gardens, Copenhagen  
in Merriweather Park



Scale Reference:  
Millennium Park, Chicago  
in Merriweather Park

**Michael McCall, President & CEO**  
Nina Basu, General Counsel  
Martin Knott, Chair  
Karen Newell, Vice Chair & Secretary  
Kirsten Coombs, Treasurer  
Dick Boulton, Director  
Milton Matthews, Director  
Gregg Schwind, Director  
Dave Sciamarelli, Director  
W. Gill Wylie, Director

**Partners:**

President, Strategic Leisure, Inc.  
Principal, Basu Law Firm, LLC  
President, Knott Mechanical, Inc.  
Director of External Affairs, Mid Atlantic Arts Foundation  
Member, Town Center Village Board  
Columbia Association Director  
President & CEO, Columbia Association  
Columbia Association Director; Director, Federal Housing Finance Agy.  
Real Estate Advisor, MacKenzie Commercial Real Estate Services, LLC  
President, Johns Hopkins Medicine Medical Management Corp.  
Howard County & Columbia Association



10630 Little Patuxent Parkway  
Century Plaza Suite 315  
Columbia, MD 21044  
410-740-0029  
© Inner Arbor Trust, Inc. 2015

**MERRIWEATHER PARK**  
AT SYMPHONY WOODS  
MERRIWEATHERPARK.ORG

